

## Featured Highlights

### LIVING AREA

- 42" LCD Flat Panel TV on Swivel Between Kitchen & Living Room
- DVD Player w/Up-Converter & HDMI Cable
- Carpet

### KITCHEN

- Oak or Cherry Flat Panel Cabinet Doors w/Residential Hidden Hinges
- Oak or Cherry Face Frames
- Dinette Chandelier
- Stainless Steel Sink w/Single Lever Faucet & Sprayer
- Tall Overhead Cabinets w/Adjustable Shelves
- Recessed Can Lights
- 18 Cu. Ft. Double Door Frost Free Refrigerator
- 30" Deluxe Gas Range w/Spacesaver Microwave Range Hood
- Dishwasher
- Overhead Cabinet Above Refrigerator
- 4" HPL Backsplash

### BATHROOMS

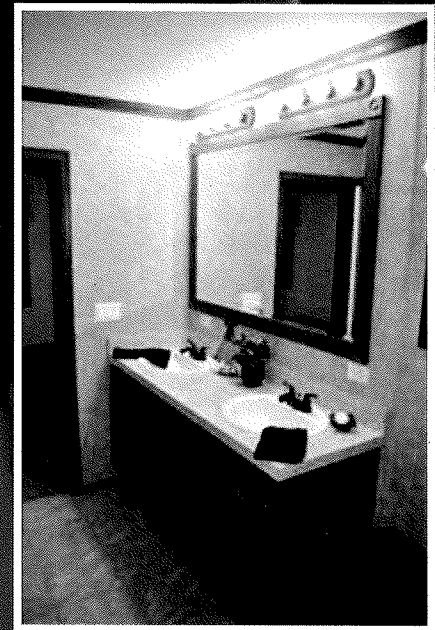
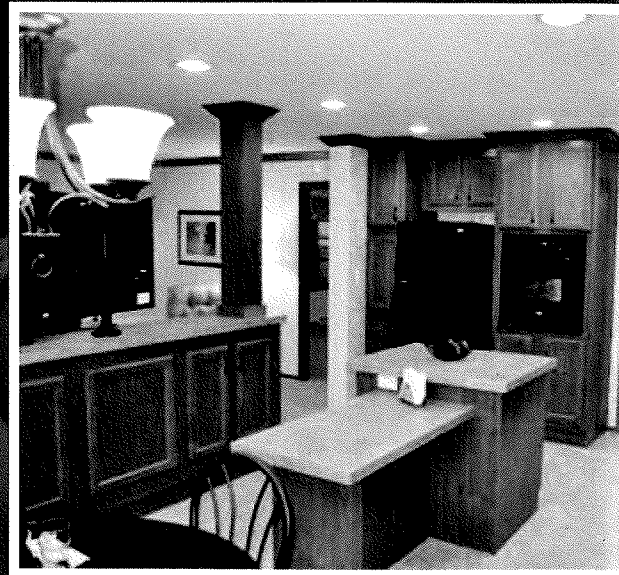
- Privacy Locks
- Oak or Cherry Flat Panel Cabinet Doors w/Residential Hidden Hinges
- Oak or Cherry Face Frames
- One-Piece Fiberglass Tub / Shower Combo — Hall Bath
- Corner Shower Stall w/Clear Glass Door & Two Heads (Hand Held & Waterfall)
- Residential Raised Lav Base in Master Bath
- Strip Light — Master Bath
- Power Vent Fan
- China Sink w/Over Flow & Pop-Up Drain
- China Commodes
- Toilet Tissue Holder
- Towel Bar
- 4" HPL Backsplash

### BEDROOMS

- Carpet
- Ventilated Wire Shelving

### ADDITIONAL FEATURES

- 8'-0" Sidewall Height
- Flat Ceiling Throughout
- Textured Ceiling
- Large Ceiling Cove — Living Room / Dining Room / Kitchen / Hall
- 48" Tall Wainscot in Dining Room
- Shingle Roof w/25 Year Shingles & Roof Vent
- Vinyl Double 4" Lap Siding
- Carpet Pad Throughout
- Lever Latch Door Handles
- Rubbed Bronze Light Fixtures & Hardware
- Gas Furnace w/Metal Door
- 30 Gal. Electric Water Heater w/Dual Element
- Water Shut-Off Valve at All Fixtures
- PEX Water Lines
- Front Door w/Sunburst Window
- 9-Lite Rear Door
- Deadbolt Front & Rear Door w/Keyed Alike Hardware
- Vinyl Insulated Windows w/Low "E" Glass
- Egress Windows in Bedrooms
- Pre-Finished Door Jambs
- Shelf Above Washer & Dryer
- Wire For Dryer
- Plumb for Washer
- 100 Amp Service Entrance
- 2 x 6 Sidewalls, 16" o.c.
- 2 x 6 Floor Joists, 16" o.c.
- Graduated Fiberglass Heat Duct w/Baseboard Registers
- Toe-Kick Registers in Kitchen & Lavs
- Copper Wiring
- Smoke Detector w/Battery Backup & False Alarm Control
- Exterior Receptacle w/GFI Breaker
- Electrical Breaker Box
- Code Insulation
- Exterior Light at All Exterior Doors
- Iron Gas Piping w/Shut-off Valves



### INCLUDED VALUE PACKAGE

- Tiled Entry
- Exterior Frost Free Faucet
- Carpet Tack Strip
- Radius Shower Rod & Curtain @ Hall Bath
- 1-1/2" Wood Blinds w/Valance Insert
- Whole House Water Shut-Off (Interior)

